

ELASTIC FORCE

DECEMBER 14, 2021

THEORY RECAP

Suppose you take a rubber cord and hold one of its ends in your right hand and the other end in your left hand and start pulling your hands apart. What will happen? You will be able to move your hands away to some distance but then you will start feeling the resistance of the cord. Why does it happen?

The reason is elasticity. It is the property of objects to resist deformation. Indeed, when you move your hands apart, the rubber cord is deformed because its length has to change. And it resists being deformed by exerting a force which tries to move your hands back together and bring its length back to normal.

Elasticity is a property of any solid object - rubber, steel, wood, plastic, etc. All of them deform under force, some less than the others, so some of these materials we usually see as undeformable. But they only really differ in how big a force the same deformation will cause.

What determines how big the elasticity force is? This was first answered by an English 17-th century scientist Robert Hooke. As a model of a deforming object let us use a spring. It has some equilibrium length l . Then if it is deformed by some force F so that its length becomes $l + \Delta l$ (so the elongation is Δl), F is directly proportional to Δl :



$$F = k\Delta l$$

This relation is called **Hooke's law**. Here k is a coefficient called spring constant - it is a property of a given spring. For example, if a force of 1 N causes some spring to become longer by 1 cm, we know that a force of 2 N will cause this spring to become longer by 2 cm.

We can also calculate spring constant for this spring : $k = \frac{F}{\Delta l} = \frac{1 \text{ N}}{1 \text{ cm}} = 1 \frac{\text{N}}{\text{cm}}$. We see that

spring constant has units $\frac{\text{N}}{\text{cm}}$, or in the metric system $\frac{\text{N}}{\text{m}}$ which is a slightly less convenient unit for springs we might deal with in everyday life.

Hooke's law explains how a spring scale (also called dynamometer if it is calibrated in Newtons) works. Indeed, if you attach some object of mass m to the spring and let it hang, the spring will become longer proportionally to the mass of the object (technically, to its weight mg , but g is a constant - so we can say that elongation is proportional to m). Then all you have to do is attach a pointer to the end of the spring and calibrate your scale. Masses of 1 kg, 2 kg, 3 kg etc. are equally spaced on this scale because of the Hooke's law.

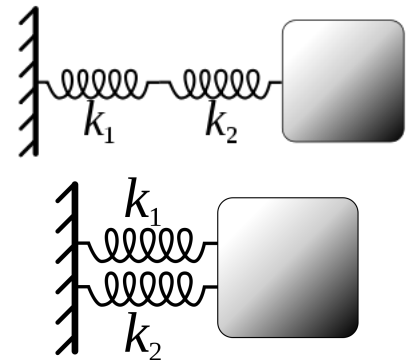


Slinky experiment video. If you wish to review our Slinky dropping experiment, I have uploaded a slow-motion video to a Google Drive:

<https://drive.google.com/file/d/1n4M1NJwlmMkh0WCCmsxk3-J9x-pzZiZU/view?usp=sharing>

HOMEWORK

1. A spring with spring constant $10 \frac{\text{N}}{\text{cm}}$ is attached to the ceiling. We hang a 5 kg block from this spring. Find deformation of the spring.
2. A dynamometer is calibrated in Newtons. You measure the distance between a 2 N and a 5 N marks and find that it is 6 cm. What is the spring constant of the spring in this dynamometer? What is the distance between a 0 N and a 5 N marks?
3. Amazon continues improving its robots. Now the robot should drag a box by a spring attached to it. The box has mass 10 kg, friction coefficient is 0.5 and spring constant is $20 \frac{\text{N}}{\text{cm}}$. What is deformation of the spring if the robot drags the box with horizontal acceleration 3 m/s^2 ?
- *4. In systems with several springs a notion of effective spring constant could be useful. Suppose that we can replace several springs by one spring and get the same total deformation under the same force. Then spring constant of this one spring is called the effective spring constant of a system. Find effective spring constant for "series" (top figure) and "parallel" (bottom figure) connection of two springs with spring constants $k_1 = 5 \frac{\text{N}}{\text{cm}}$ and $k_2 = 10 \frac{\text{N}}{\text{cm}}$.



Images source: Wikipedia